
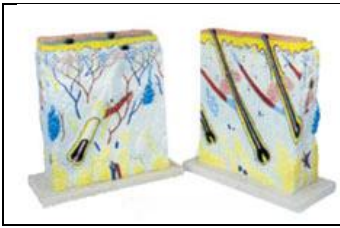


Physiological Models

	<p>Giant Dental Care Model With Toothbrush XC-XC-403</p>		<p>Life Size Shoulder Joint XC-109</p>
	<p>SKULL Model XC-104</p>		<p>Adult Male Pelvis With Stand</p>
	<p>Life - Size Hip Joint XC-110</p>		<p>Life-Size Knee Joint XC-111</p>
	<p>Torso Models</p>		<p>Life-size Elbow Joint XC-112</p>
	<p>Life Size Foot Joint XC-113</p>		<p>Life-Size Hand Joint XC-114</p>
	<p>New Style Giant Ear Model</p>		<p>Heart Model SMALL XC-307A</p>
	<p>Jumbo Heart Model XC-307</p>		<p>Brain With ArteriesXC-308</p>
	<p>Human Kidney With Adrenal GlandXC-310-3</p>		<p>Human Torso</p>



Liver Pancreas And Duodenum Model XC-311



Enlarged Skin Model XC-313



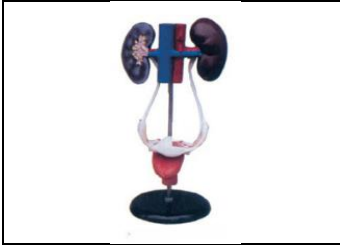
Giant Eye Model XC-316



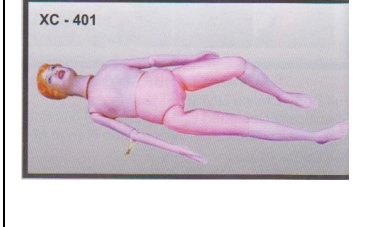
Dental Model (for ages 8+)



Male Urogenital System XC-331



Female Urogenital System XC-332



Multi Functional Patient Care Manikin XC-401



Whole Body Basic Cpr Manikin XC-406



The Development Process For Fetus



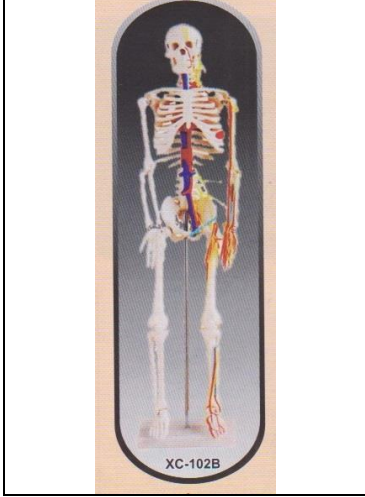
Model Of The Transparent Lung Segment XC-330



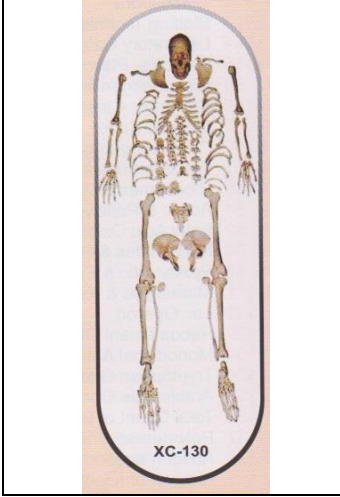
Magnified Human Larynx Model XC-301



Stomach Model XC-306



Mini Skeleton With StandXC-102B



DISARTICULATED BONE SETXC-130