

# PRODUCT CATALOGUE

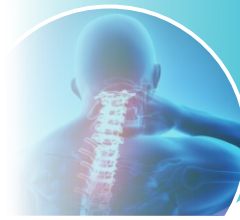
  
**NuOrtho**  
LIVE PAIN FREE



## OUR RANGE:

- CERVICAL AIDS
- BODY BELTS & BRACES
- FRACTURE AIDS
- ELBOW & WRIST SUPPORTS
- FINGER SUPPORTS
- KNEE CARE AIDS
- ANKLE SUPPORTS
- FOOT CARE
- EXERCISE & PHYSIO AIDS
- WELLNESS PRODUCTS
- HOT & COOL THERAPY
- MOBILITY AIDS





Cervical or Neck pain can be due to various causes like cervical spondylosis, whiplash injuries, strain of the neck muscles or nerve compression.

- NuOrtho cervical collars stabilize and keep the neck in a neutral position to treat neck pain
- It relieves pressure on the spine by providing support for the head and chin.
- NuOrtho cervical pillows helps to rest the neck in neutral position. They also help to improve your sleep by relieving and supporting tense muscles in your neck and shoulders

## CERVICAL AIDS



SKU No. CA01

**CERVICAL COLLAR - SOFT**  
Sizes : S | M | L | XL | XXL



SKU No. CA02

**CERVICAL COLLAR (REGULAR)**  
Sizes : S | M | L | XL | XXL



SKU No. CA03

**CERVICAL COLLAR HARD (ADJ. HEIGHT)**  
Sizes : S | M | L | XL | XXL



SKU No. CA04

**PHILADELPHIA COLLAR**  
Sizes : S | M | L



SKU No. CA07

**CERVICAL PILLOW - DELUXE**  
Sizes : UNIVERSAL



SKU No. CA10

**CERVICAL CONTOURED PILLOW**  
Sizes : UNIVERSAL



SKU No. CA13

**CERVICAL CONTOURED MEMORY FOAM PILLOW**  
Sizes : UNIVERSAL



Common injuries of the finger are De Quervain tenosynovitis, arthritis, metacarpal fracture, PIP and DIP joint injury etc.

- NuOrtho finger supports stabilise the joints of the finger, reduce swelling and relieve pain.



SKU No. FS01

**THUMB SPICA SUPPORT**  
Sizes : UNIVERSAL

## FINGER SUPPORTS



SKU No. FS02

**BOXER FINGER SUPPORT**  
Sizes : UNIVERSAL



SKU No. FS03

**BASE BALL FINGER SUPPORT**  
Sizes : UNIVERSAL



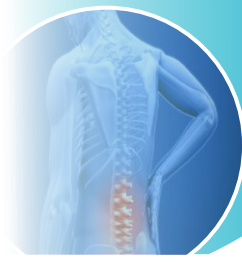
SKU No. FS04

**COT FINGER SUPPORT**  
Sizes : UNIVERSAL



SKU No. FS05

**MALLET FINGER SUPPORT**  
Sizes : UNIVERSAL



Back pain has many causes like incorrect posture, sitting for too long at work and loading the back incorrectly.

- Low back pain can also be due to degenerative conditions like lumbar spondylosis, disc prolapse, facet arthropathy, sciatica etc.
- NuOrtho Body belts and braces are anatomically designed to maintain correct posture, support weak back muscles, relieve back pain and help in a faster recovery.

## BODY BELTS & BRACES



SKU No. BB01

**SACRO LUMBAR BELT  
DOUBLE ELASTIC STRAPS**  
Sizes : S | M | L | XL | XXL | 3XL



SKU No. BB02

**LUMBO SACRAL BELT  
(WITH MONOFILAMENT ELASTIC STRAPS)**  
Sizes : S | M | L | XL | XXL | 3XL



SKU No. BB03

**CONTOURED LUMBO SACRAL BELT**  
Sizes : S | M | L | XL | XXL | 3XL



SKU No. BB04

**ABDOMINAL BELT 8 INCH WIDTH**  
Sizes : S | M | L | XL | XXL | 3XL



SKU No. BB05

**RIB BELT 6 INCH WIDTH**  
Sizes : S | M | L | XL | XXL



SKU No. BB06

**STERNAL BELT**  
Sizes : S | M | L | XL | XXL



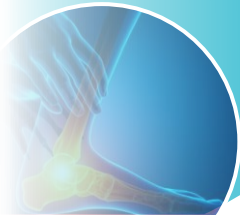
SKU No. BB08

**DORSO LUMBAR SPINAL BRACE  
(TAYLOR BRACE)**  
Sizes : S | M | L | XL | XXL



SKU No. BB09

**PREGNANCY BACK SUPPORT**  
Sizes : STD | SPL



Ankle pain can be due to ligament sprain, muscle strain, tendon injury or fracture

- NuOrtho ankle supports help to relieve pain, reduce swelling, stabilise the joint and prevent further damage to the ankle.



SKU No. AS01

**ANKLE BINDER**  
Sizes : UNIVERSAL

## ANKLE SUPPORTS



SKU No. AS02

**3D ANKLER WITH STRAP**  
Sizes : S | M | L | XL | XXL



SKU No. AS03

**ANKLET TUBULAR**  
Sizes : S | M | L | XL | XXL



SKU No. AS04

**ANKLE STIRRUP BRACE**  
Sizes : UNIVERSAL



SKU No. AS05

**ANKLE FOOT ORTHOSES (AFO)**  
Sizes : S | M | L



Some common causes of shoulder pain are dislocated shoulder, fracture and rotator injuries.

- NuOrtho offers a wide range of fracture aids to support the shoulder in the resting position, provide pain relief and speed up the healing process.



SKU No. FA01

**ARM POUCH SLING (BAGGY)**  
Sizes : S | M | L | XL | XXL | 3XL



SKU No. FA02

**ARM POUCH SLING (TROPICAL)**  
Sizes : S | M | L | XL | XXL | 3XL



SKU No. FA03

**ARM POUCH SLING (SPORTY)**  
Sizes : S | M | L | XL | XXL | 3XL



SKU No. FA07

**ARM POUCH SLING (CHILD)**  
Sizes : CHILD | X - SMALL



SKU No. FA04

**SHOULDER IMMOBILIZER**  
Sizes : STD | SPL



SKU No. FA05

**ELASTIC SHOULDER IMMOBILIZER**  
Sizes : S | M | L | XL | XXL



SKU No. FA06

**SHOULDER SUPPORT**  
Sizes : S | M | L | XL | XXL



SKU No. FA08

**CLAVICLE BRACE**  
Sizes : STD | SPL



SKU No. FA09

**POSTURE CORRECTOR**  
Sizes : S | M | L | XL | XXL



SKU No. FA10

**CAST SHOE**  
Sizes : S | M | L | XL



Cold Therapy is a treatment recommended for the home care of many injuries, like caused by sports, accidental injuries.

- Cold therapy decreases blood flow, reduces swelling and gives relief to body.

## COOL THERAPY



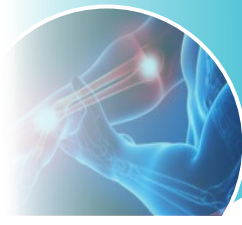
SKU No. HC01

**EYE MASK - COOL GEL**  
Sizes : UNIVERSAL



SKU No. HC02

**MULTIPURPOSE COOL GEL PACK**  
Sizes : REG | LARGE



Wrist pain can be due to various causes like carpal tunnel syndrome, tendonitis, tenosynovitis, rheumatoid arthritis and injuries.

- Elbow pain can be due to epicondylitis, tendonitis, arthritis etc.
- NuOrtho Elbow & Wrist supports protect the joint to relieve pain and help in a faster recovery.

## ELBOW & WRIST SUPPORTS



SKU No. EW01

**WRIST WRAP**

Sizes : UNIVERSAL



SKU No. EW02

**WRIST BINDER DOUBLE LOCK**

Sizes : STD | SPL



SKU No. EW03

**WRIST SUPPORT (LEFT/RIGHT)**

Sizes : UNIVERSAL



SKU No. EW04

**3D ELBOW BRACE WITH STRAP**

Sizes : S | M | L | XL | XXL



SKU No. EW05

**TENNIS ELBOW SUPPORT WITH SILICONE PAD**

Sizes : STD | SPL



SKU No. EW06

**FOREARM SUPPORT (LONG)**

Sizes : UNIVERSAL



SKU No. EW07

**ELBOW BRACE**

Sizes : S | M | L | XL | XXL



NuOrtho Exercise & Physio products are good for rehabilitating and restoring muscle & joint functions.

- Also widely used for Physiotherapy & Remedial exercises, stress releaser, running, weight loss, gym exercises and sports specific training etc.



SKU No. EP01

**ORTHO WEIGHT CUFF**

Sizes : 1/2KG – 1KG – 2KGS



SKU No. EP05

**GYM BELT (WEIGHT LIFTING)**

Sizes : S | M | L | XL



SKU No. EP02

**EXERCISE GEL BALL**

Sizes : ● SOFT ● MEDIUM ● HARD



SKU No. EP03

**PHYSICAL RESISTANCE LATEX BAND**

Sizes : ■ LIGHT ■ MEDIUM ■ HEAVY ■ 2X-HEAVY



SKU No. EP04

**SWEAT BELT (TUMMY TRIMMER)**

Sizes : STD | SPL



The common causes of knee pain are Osteoarthritis, Ligament or meniscus injuries, Cartilage tears etc

- Knee pain can also be due to trauma like knee fracture and post knee surgery
- NuOrtho knee care aids are anatomically designed to support weak knee muscles, relieve knee pain and help in a faster recovery.

## KNEE CARE AIDS



SKU No. KA01

**KNEE CAP**

Sizes : S | M | L | XL | XXL | 3XL



SKU No. KA05

**KNEE BRACE SHORT TYPE**

Sizes : S | M | L | XL | XXL



SKU No. KA06

**KNEE BRACE LONG TYPE**

Sizes : S | M | L | XL | XXL



SKU No. KA07

**KNEE WRAP OPEN PATELLA**

Sizes : STD | SPL



SKU No. KA08

**KNEE WRAP HINGED OPEN PATELLA**

Sizes : S | M | L | XL | XXL | 3XL



SKU No. KA09

**3D KNEE CAP**

Sizes : S | M | L | XL | XXL | 3XL



SKU No. KA10

**CALF SUPPORT**

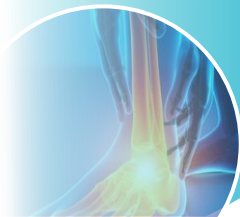
Sizes : STD | SPL



SKU No. KA11

**THIGH SUPPORT**

Sizes : S | M | L | XL | XXL | 3XL



Pain in the feet can be due to plantar fasciitis, metatarsalgia, calcaneal spurs etc.

- NuOrtho footcare products relieve pressure on the foot and provide faster pain relief.



SKU No. FC01

**ORTHO SILICONE INSOLES WITH SOFT INSERT**

Sizes : S - M | L - XL

## FOOT CARE



SKU No. FC02

**SILICONE HEEL CUSHION WITH SOFT GEL**

Sizes : UNIVERSAL



SKU No. FC03

**SILICONE INSOLE WITH ARCH SUPPORT**

Sizes : S | M | L | XL



SKU No. FC04

**METATARSAL CUSHION SILICONE PAD**

Sizes : UNIVERSAL



SKU No. FC05

**BUNION SUPPORT**

Sizes : UNIVERSAL



NuOrtho wellness range consists of ergonomically designed Back Supports and seat cushions to maintain a correct posture and to live pain free lifestyle.



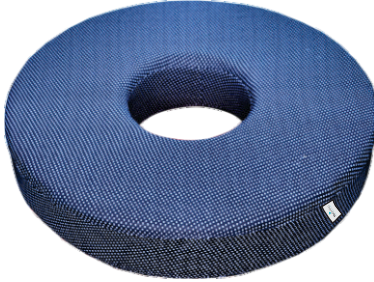
**SKU No. WP01**  
**ORTHO BACKREST COMFORT**  
Sizes : UNIVERSAL



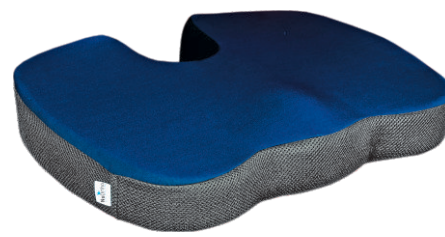
**SKU No. WP02**  
**ORTHO LUMBAR BACK SUPPORT**  
Sizes : UNIVERSAL



**SKU No. WP03**  
**ORTHO MOULDED LOWER BACKREST**  
Sizes : UNIVERSAL



**SKU No. WP05**  
**ROUND RING CUSHION FOR PILES / BED SORES**  
Sizes : UNIVERSAL



**SKU No. WP06**  
**COCYX (SPINE) CUSHION FOR TAILBONE**  
Sizes : UNIVERSAL



**SKU No. WP07**  
**TRAVEL NECK PILLOW - MEMORY FOAM**  
Sizes : UNIVERSAL

## CERTIFICATE OF REGISTRATION AND CONFIRMATION

**OCV**  
**Certificate of Compliance**

We hereby declare that the technical file of product complies with the requirement of Medical Devices (ISM/42/IEC) & Personal Protective Equipment Directive (ISM/6/IEC), Manufacturer.

**Name : NUORTHO WELLNESS LLP**  
**Address :** Regd. Office - 106 & 107, Sambhav Industrial Estate, Narghar, Vasai East - 401210, Dist. Palghar, Maharashtra, India  
Factory Address - Unit No. 123, Dewan-4 Industrial Estate, Narghar, Vasai East - 401210, Dist. Palghar, Maharashtra, India

Has been assessed by Optimum Certifications Inc. and found to be in compliance with meeting the requirements of:

**Product :** Orthopedic Rehabilitation Aids Such As, Cervical Aids, Body Belts & Braces, Fracture Aids, Elbow & Wrist Supports, Finger Support, Knee Cap, Ankle Support, Foot Care, Wellness Products, Hat and Cool Pads, Heating Pads, Compression Stockings, Crepe, Plaster, Fixators, Prox, Cast Pads, Exercise Aids, Slip Belts, Open Belts and Mobility Aids.

The certification body has performed an audit of the above products quality system covering the design, manufacture and final inspection of certified products. The audit system has been evaluated against and subject to continuous surveillance according to Medical Devices (ISM/42/IEC) & Personal Protective Equipment Directive (ISM/6/IEC) Directive.

This certificate issued under the following conditions:

- The holder will be the only person responsible for the maintenance of their information and shall be available for design register maintenance.
- The certificate holder will comply with the requirements of the quality system set out in the certificate.
- The certificate holder will be notified by written notice of any non-compliance with the requirements of the certificate.
- The certificate holder will be notified by written notice of any non-compliance with the requirements of the certificate.

**Date of Certification: 21<sup>st</sup> October 2022**    **2<sup>nd</sup> Surveillance Due: 20<sup>th</sup> October 2024**  
**1<sup>st</sup> Surveillance Due: 20<sup>th</sup> October 2023**    **Certificate Expiry: 20<sup>th</sup> October 2025**

Certificate Number: **CE/18035**  
Validity of this certificate can be verified at [www.occert.com](http://www.occert.com)

Authorized Signatory: [Signature]  
Optimum Certifications Inc.

CE, OCV

**OCV**  
**Certificate of Compliance**

This is to certify that

**NUORTHO WELLNESS LLP**  
at  
Regd. Office - 106 & 107, Sambhav Industrial Estate, Narghar, Vasai East - 401210, Dist. Palghar, Maharashtra, India  
Factory Address - Unit No. 123, Dewan-4 Industrial Estate, Narghar, Vasai East - 401210, Dist. Palghar, Maharashtra, India

Has been assessed by Optimum Certifications Inc. and found to be in compliance with meeting the requirements of:

**GMP**  
**Good Manufacturing Practices**  
For the following scope of activities:  
"Manufacturing of Orthopedic Rehabilitation Aids and Wellness Appliances"

**Date of Certification: 21<sup>st</sup> October 2022**    **2<sup>nd</sup> Surveillance Due: 20<sup>th</sup> October 2024**  
**1<sup>st</sup> Surveillance Due: 20<sup>th</sup> October 2023**    **Certificate Expiry: 20<sup>th</sup> October 2025**

Certificate Number: **GMP/22N18036**  
Validity of this certificate can be verified at [www.occert.com](http://www.occert.com)

Authorized Signatory: [Signature]  
Optimum Certifications Inc.

GMP, OCV

**Certificate of Registration**

This is to certify that Medical Devices - Quality Management System of

**NUORTHO WELLNESS LLP**

Reg. Office - 106 & 107, Sambhav Industrial Estate, Narghar, Vasai East - 401210 Dist. Palghar, Maharashtra, India  
Factory Address - Unit No. 123, Dewan-4 Industrial Estate, Narghar, Vasai East - 401210 Dist. Palghar, Maharashtra, India

is in accordance with the requirements of the following standard

**ISO 13485:2016**  
(Medical Devices - Quality Management System)

**SCOPE**  
Manufacturing of Orthopedic Rehabilitation Aids and Wellness Appliances

Certificate Number: 211022089102  
Initial Registration Date: 21-Oct-2022  
1<sup>st</sup> Surveillance Date: 21-Sep-2023  
2<sup>nd</sup> Surveillance Date: 21-Sep-2024  
Certificate Expiry Date: 20-Oct-2025

To verify certificate, visit at:  
[www.arscert.com](http://www.arscert.com)  
<https://www.iaftracevaluation.org>  
<https://www.iaftracevaluation.org/>

Issued by ARS Assessment Private Limited  
Managing Director: [Signature]

UAF, IAF, OCV

IAF Address: 401 North Center Dr. STE 202, Norfolk, VA 23502, United States of America.



Wide range of mobility products help patients to restore their Mobility.

• Our range of products like, walkers, walking sticks, commode chair, commode stool and Backrest are technically engineered.

## MOBILITY AIDS



P.C. No. GX-1001

Invalid Aluminium Walking Stick U Shape Handle



P.C. No. GX-1002

Invalid Aluminium Walking Stick L Shape Handle



P.C. No. GX-1004

Invalid Aluminium Tripod Stick U Shape Handle



P.C. No. GX-1006

Invalid Aluminium Quadripod Stick U Shape Handle



P.C. No. GX-2001

Invalid Aluminium Underarm Crutch (S / M / L) Pair



P.C. No. GX-4001

Invalid MS Elbow Crutches (Pair) (3 Colours)



P.C. No. GX-3114

Invalid MS Folding Walker Single Bar



P.C. No. GX-5001

Invalid MS Hospital Backrest Stand



P.C. No. GX-7003

Invalid MS Folding Commode Stool U Frame



P.C. No. GX-8001

Invalid MS Commode Chair

Authorised Dealer:

P.C. No. GX-3223

Invalid Aluminium Deluxe Folding Walker with Castor (Anodized)

